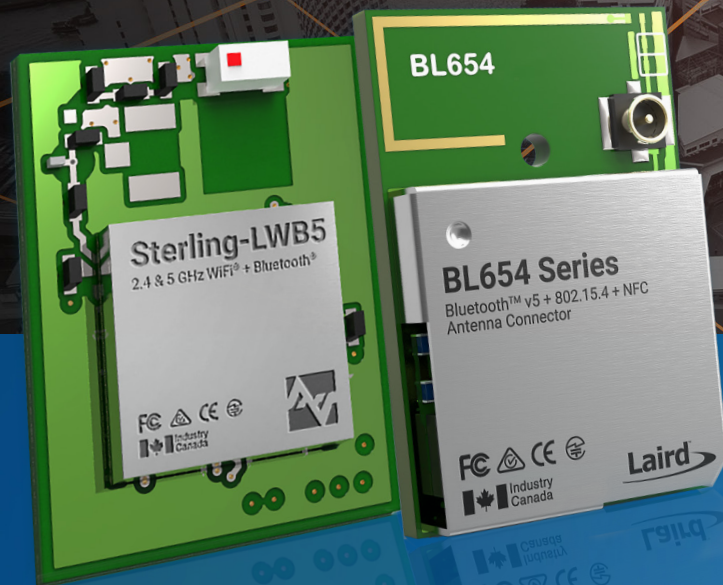


Wireless Connectivity Solutions

Connected. No Matter What.



LairdTM **CONNECTIVITY**

No matter what your wireless design needs are, Laird Connectivity has a solution right for you.



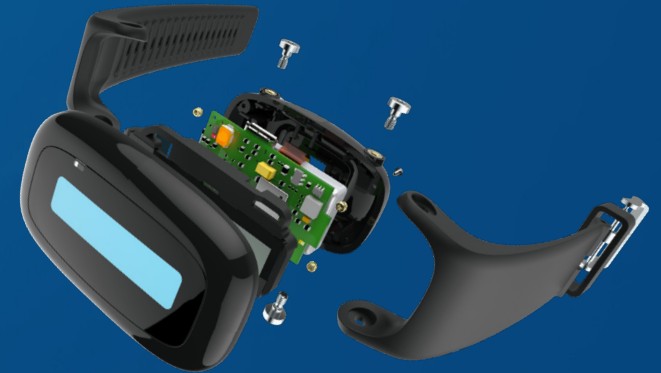
Choose from our wide selection of **off-the-shelf products**.

- Wi-Fi, Bluetooth, LoRaWAN Modules
- IoT Platforms – Sensors and Gateways
- Embedded Antennas



We can also **tailor our products** to suit your specific design needs.

- Custom Enclosure Color and Label
- Client Specific Software Features
- Antenna Cable Length and Connector Changes
- Kitting & Custom Packaging
- And More!



Looking for something more **customized**? We can do that too.

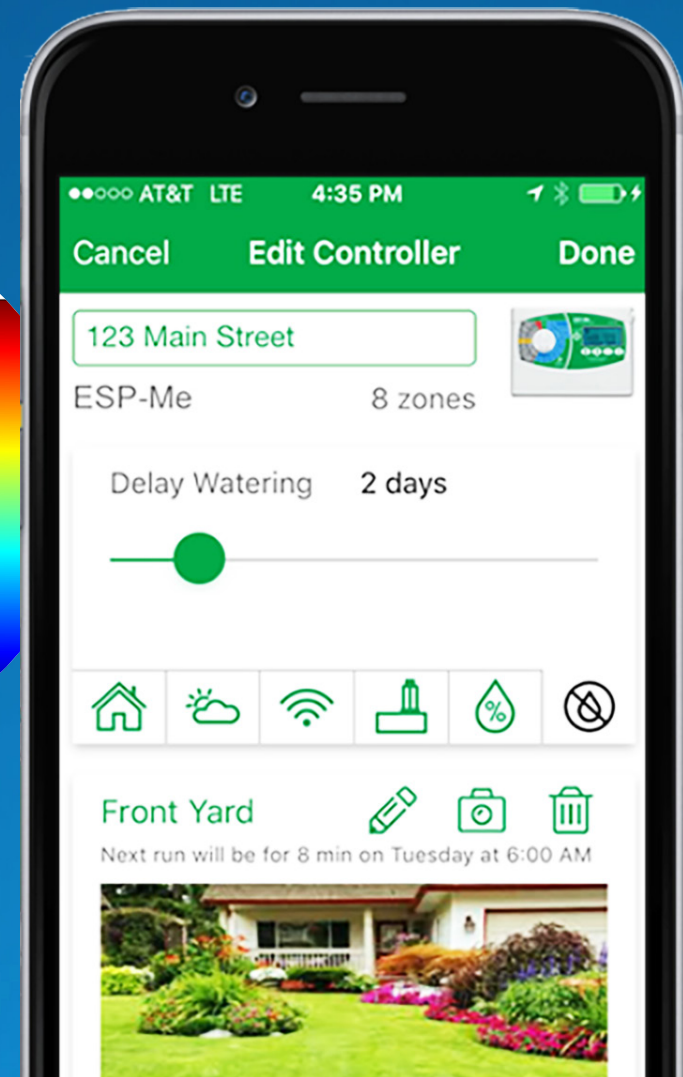
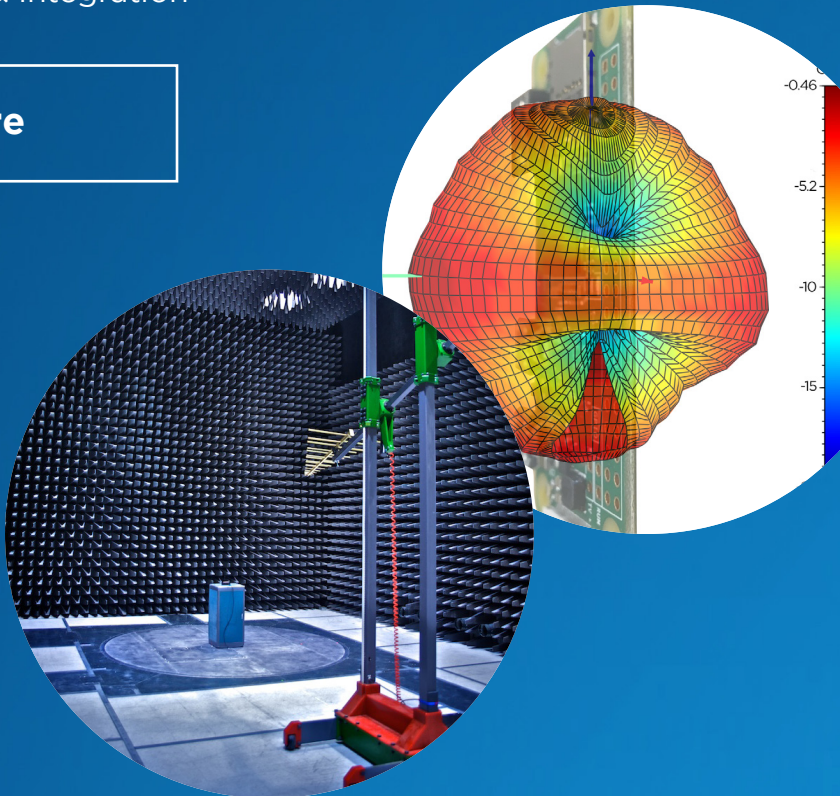
- Custom Housing Design
- Firmware Customization and Development
- Hardware Design Customization
- Cloud Integration
- Balance User Experience and Aesthetics with Electrical & RF Design

Looking for additional services to support integrating our product into your design?

Laird Connectivity offers the most comprehensive services to help you reduce risk and get to market faster.

- Antenna Selection/Placement or Custom Design
- Worldwide EMC Testing and Certification
- Mobile Application Development
- Cloud Architecture & Integration

[Learn More](#)



Connected. No matter what.

Laird Connectivity is a long-established industry leader in enabling wireless connectivity. We offer the industry's broadest spectrum of products spanning Wi-Fi, Bluetooth/BLE, LoRaWAN, custom point-to-point implementations and more. Bring innovative wireless products to market with our certified RF modules that enable secure, reliable wireless connectivity in the harshest RF environments in medical, industrial, and commercial settings.

[Learn More](#)

Sentrius™ IoT Platforms



RS1xx

- LoRaWAN + BLE temperature and humidity sensor
- LoRaWAN + BLE external temperature probe
- Fully customizable – hardware, enclosures, labels and more
- End-to-end solutions provide seamless integration



RG1xx

- Multiple interfaces: LoRaWAN, 802.11a/b/g/n, BT v4.0 (BLE and Classic) & Ethernet
- Full Linux OS – Kernel v4.x running on Atmel A5 Core @ 536 MHz
- IP67 Certified enclosures available
- Seamless integrations with various LoRaWAN network servers



IG60

- Rugged connectivity: Bluetooth 5, 802.11ac Wi-Fi, RS 232/422/485, & dual-ethernet
- Hardware root-of-trust based secure image and storage
- AWS IoT Greengrass integration and smartphone companion app
- Over-the-air security updates
- BT 4.2 (BT5 ready)



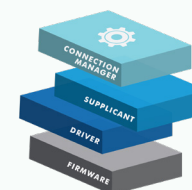
60 Series

- Marvell 88W8997 chipset
- 802.11ac Wave 2 + Dual Mode BT5 Ready
- Dual Band Wi-Fi with 2x2 MU-MIMO
- Enterprise level security/
ultra-fast Scan & Roam
- Reduced power consumption with
28nm process



60 Series System on Module (SOM)

- Atmel A5 Processor
- 1Gb RAM / 2Gb Flash
- 60 Series wireless connectivity
- Dual-Ethernet
- LCD Display support
- Variety of peripheral interfaces
- Laird Connectivity's Chain of Trust Security
- BT5 Ready



Summit Software Stack

- Unleash the full potential of the 60 Series with the Summit Software Stack



Sterling-EWB

- Cypress CYW4343W Chipset
- 802.11/g/n + Dual-Mode BT v4.2
- Available in 3 variants: SiP, u.FL or chip antenna
- Reference design for embedded applications w/ Broadcom WICED and STM MCU
- STM32F412 + 256 KB SRAM, 1 MB Internal Flash, 2 MB SPI Flash



Sterling-LWB

- Cypress CYW4343W Chipset
- 802.11/g/n + Dual-Mode BT v4.2
- Available in 3 variants: SiP, u.FL or chip antenna
- Reference design for embedded applications w/ Broadcom WICED and STM MCU



Sterling-LWB5

- Cypress CYW43353 Chipset
- 802.11ac + Dual-Mode BT v4.2
- Pin-compatible, dual-band version of Sterling-LWB
- Available in 3 variants: SiP, u.FL or chip antenna



BL654

- Nordic nRF52840 Chipset
- ARM Cortex M4F (1MB Flash, 256k RAM)
- Bluetooth 5 (BLE) + NFC and BLE Mesh
- Thread 802.15.4 functionality (via Nordic SDK)
- Use Nordic SDK, AT Commands or *smartBASIC*



BL654PA

- Nordic nRF52840 Chipset
- Cortex M4F (1MB Flash, 256k RAM)
- -98.5 dBm to -107 dBm
- Provides +10dBm more than standard BL654
- Bluetooth v5 Low Energy (BLE) + NFC
- Integrated Skyworks Power Amplifier - Up to +18 dBm output



BL652

- Nordic nRF52832 Chipset
- Bluetooth 5 BLE + NFC & integrated MCU
- ARM Cortex-M4F (512k/64k) and BLE stack
- Advanced security through BT 5 and NFC
- Develop with Nordic SDK or *smartBASIC*



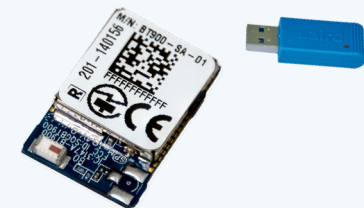
BL651

- Nordic nRF52810 Chipset
- Low-Cost Bluetooth 5 Module
- Bluetooth 5 (BLE) + ANT w/ integrated MCU
- ARM Cortex-M4 (192k/24k) and BLE stack
- Develop with Nordic SDK



BT850/BT860

- Cypress CYW20704 A2 Chipset
- Bluetooth v5 connectivity
- USB/UART HCI module and packaged adapter
- low-power / long-range for Classic and BLE



BT900

- CSR 8811 Chipset
- Dual-Mode Bluetooth v4.0 w/ integrated MCU
- On-module ARM Cortex-M3 MCU and stack
- Simultaneous BT and BLE connections
- Supports hosted or hostless operation

LoRaWAN



RM1xx

- LoRaWAN + BT v4.1 (BLE)
- ARM Cortex M0 w/ LoRaWAN and BLE stacks
- Ultra-low power with long-range up to ~ 15km
- 915 MHz (N. America) or 868 MHz (EU)

[Learn More](#)

Cellular



Pinnacle™ 100 Modem

- LTE CAT-M1 / NB-IoT radio via Sierra HL7800 (Altair ALT1250)
- MCU / Bluetooth 5 radio via Nordic nRF52840
- BT v5, Coded PHY (Long-range), 2MPHY, BLE Mesh
- Antenna Options
- Industrial Temp Range

[Learn More](#)

Embedded Antennas

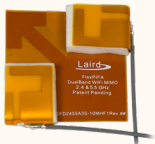
[Learn More](#)

Laird Connectivity offers a broad portfolio of cost-effective embedded antenna solutions that provide unmatched connectivity for your wireless devices. Whether for Wi-Fi/Bluetooth or Multiband/Cellular IoT and M2M applications, the small size and form factor of our antennas make them easily concealable within a product's enclosure, eliminating any negative impact on product aesthetics.



FlexPIFA

- Industry-first patented, flexible, adhesive-backed PIFA-style Antenna with 2.4 GHz & Dual-Band options



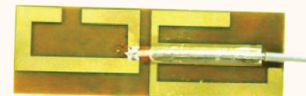
mFlexPIFA

- Industry-first patented, flexible, adhesive-backed PIFA-style Antenna optimized for placement on metal



Nanoblade

- Dual-Band 2.4GHz & 5GHz 0.1mm thick, ideal for wearable and thin devices



Nanoblade

- Patented Microsphere PCB technology with 2.4GHz Wi-Fi or Bluetooth



FlexMIMO

- The world's first and only embedded dual-band PIFA MIMO Antenna

Revie Series

- M2M and IoT antenna series supporting 868/900/1800/1900 MHz and UMTS bands
- New Revie Flex supports LTE CAT-M1 and NB-IoT devices

Mini NanoBlade Flex

- Flexible, Dual-Band omnidirectional PCB Mini NanoBlade

D-Puck

- Highly durable, cost-effective, small-scale metal antenna



Connected. No Matter What.

Laird Connectivity simplifies and enables wireless technologies with market-leading wireless modules and antennas, integrated sensor and gateway platforms, and customer-specific wireless solutions. Our best-in-class support and comprehensive engineering services help reduce risk and improve time-to-market. When you need unmatched wireless performance to connect electronics with security and confidence. Laird Connectivity delivers — no matter what.

lairdconnect.com | 330.434.7929

