

# Using the BL654 and Nordic SDK v16.0.0 with Eclipse and GCC

## BL654

Application Note

v1.1

## 1 INTRODUCTION

This application note is intended to help developers who want to use BL654 module to develop applications using freely-available tools and the Nordic SDK. The following are step-by-step instructions for setting up Eclipse, the ARM GCC compiler, and Nordic's nRF5x SDK. The ble\_app\_hrs example (which provides a peripheral heart rate service) is used to demonstrate how to build, flash, and debug SDK applications on the BL654 development kit.

## 2 REQUIREMENTS

The following are required to complete this step-by-step guide: -

- Windows 7 (or newer) machine
- BL654 Development kit (product code 455-00001 or 455-00002)
- USB A to micro USB cable (provided with BL654 development kit)

**Note:** The following sections contain a step-by-step guide on obtaining and installing the other requirements listed below. However, please note that the examples were completed and tested using the following:

- [Nordic SDK v16.0.0](#)
- [nRF5-Command-Line-Tools v9.7.1](#)
- [Segger J-Link V6.20b](#)
- [Eclipse IDE for C/C++ Developers – Version: Juno Service Release 2 – Build: 20130225-0426](#)
- [GNU ARM Toolchain v8.3.1](#)
- [GNU Make Utility v3.81](#)
- [CoreUtils for Windows](#)

Although unlikely, any deviation from the above setup can cause issues in the build. For more information regarding this, you can visit the Nordic tutorials on using SDK examples at:

<https://devzone.nordicsemi.com/tutorials/7/development-with-gcc-and-eclipse/>

## 3 DEVELOPMENT ENVIRONMENT SETUP

### 3.1 Nordic SDK

The Nordic Software Development Kit offers a rich development environment and examples for the BL654 module. It can easily be used to develop applications for the BL654 when development using freely available software and C language is preferred. The SDK offers a wide selection of drivers, libraries, and examples for the module and its peripherals.

To use Nordic's SDK for BL654 development, complete the following steps:

1. Download the Nordic SDK zip file from <https://www.nordicsemi.com/eng/Products/Bluetooth-low-energy/nRF5-SDK>. The file is located in the **DOWNLOADS** tab.
2. Once downloaded, extract and place the SDK in a suitable location on your machine, e.g.: `D:\Work\NRF5_SDK` (Figure 1).

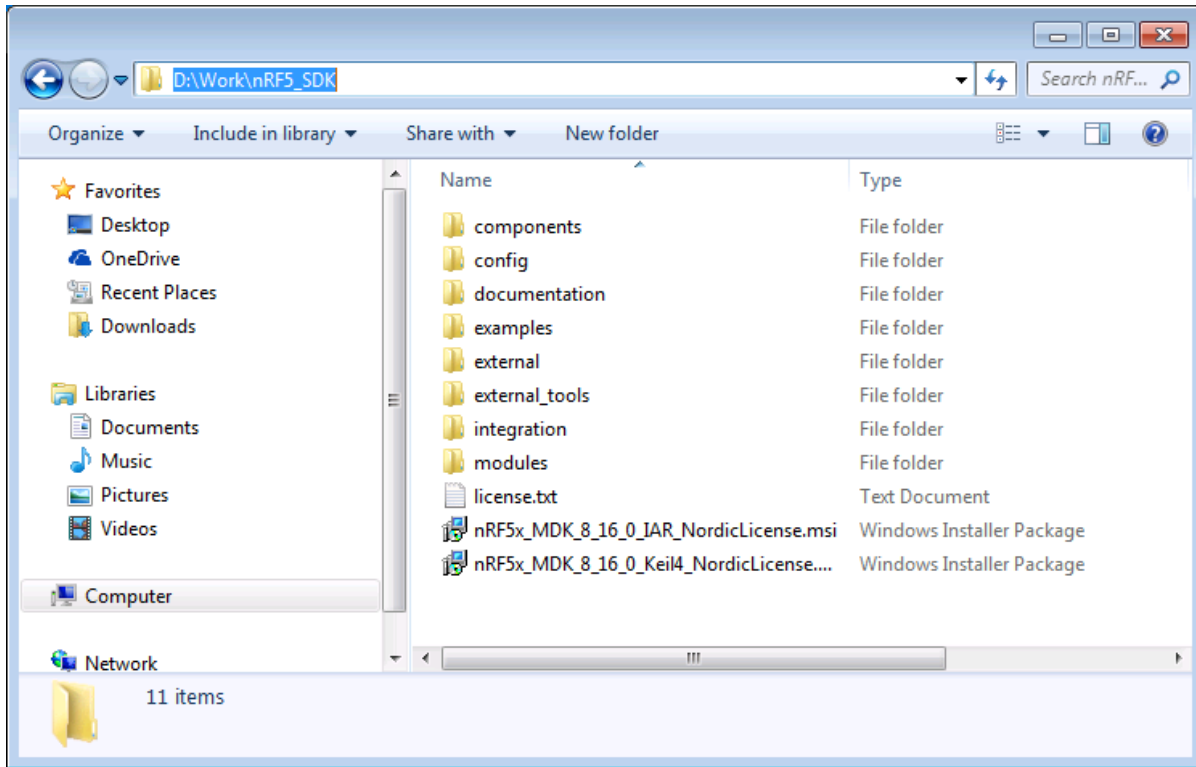


Figure 1: nRF5 SDK folder structure

By default, the BL654 uses the nRF52840's on-chip RC oscillator as its clock source, as opposed to the nRF52840 development kits which use an external crystal. The difference in oscillator source should therefore be reflected in the SDK.

3. Open and edit the `nRF5_SDK\components\softdevice\common\nrf_sdh.c` file which is originally as shown in Figure 2.

```
// Notify observers about Softdevice enable request.
if (sdh_request_observer_notify(NRF_SDH_EVT_ENABLE_REQUEST) == NRF_ERROR_BUSY)
{
    // Enable process was stopped.
    return NRF_SUCCESS;
}

// Notify observers about starting Softdevice enable process.
sdh_state_observer_notify(NRF_SDH_EVT_STATE_ENABLE_PREPARE);

nrf_clock_lf_cfg_t const clock_lf_cfg =
{
    .source      = NRF_SDH_CLOCK_LF_SRC,
    .rc_ctiv     = NRF_SDH_CLOCK_LF_RC_CTIV,
    .rc_temp_ctiv = NRF_SDH_CLOCK_LF_RC_TEMP_CTIV,
    .accuracy    = NRF_SDH_CLOCK_LF_ACCURACY
};
```

Figure 2: Original, unchanged `nrf_sdh.c`

4. Change the oscillator so that it uses the BL654 configuration as shown in Figure 3.

```
// Notify observers about Softdevice enable request.
if (sdh_request_observer_notify(NRF_SDH_EVT_ENABLE_REQUEST) == NRF_ERROR_BUSY)
{
    // Enable process was stopped.
    return NRF_SUCCESS;
}

// Notify observers about starting Softdevice enable process.
sdh_state_observer_notify(NRF_SDH_EVT_STATE_ENABLE_PREPARE);

nrf_clock_lf_cfg_t const clock_lf_cfg =
{
    .source      = NRF_CLOCK_LF_SRC_RC,
    .rc_ctiv     = 16,
    .rc_temp_ctiv = 2,
    .accuracy    = NRF_CLOCK_LF_ACCURACY_500_PPM
};
```

Figure 3: Changes to oscillator values in `nrf_sdh.c`

## 3.2 nRFX-Command-Line-Tools

The `nrfjprog` is a command line tool used for erasing and flashing the BL654 with applications. The tool is bundled as part of the nRF5x-Command-Line-Tools. You can install and setup the command line tools as follows:

1. Navigate to <https://www.nordicsemi.com/Software-and-tools/Development-Tools/nRF-Command-Line-Tools>
2. Select the **Downloads** tab.
3. Download the installer for your platform
4. Once downloaded, launch the executable. Proceed through the setup.

---

**Note:** During the setup process, you are prompted to install SEGGER J-Link. This is required for the command line tools to work, so proceed by accepting and installing it.

---

5. Once downloaded, the `nrfjprog` executable can be found at `C:\Program Files (x86)\Nordic Semiconductor\nrf5x\bin` (Figure 4).

---

**Note:** For 32-bit Windows installations, the location is:  
**C:\Program Files\Nordic Semiconductor\nrf5x\bin.**

---

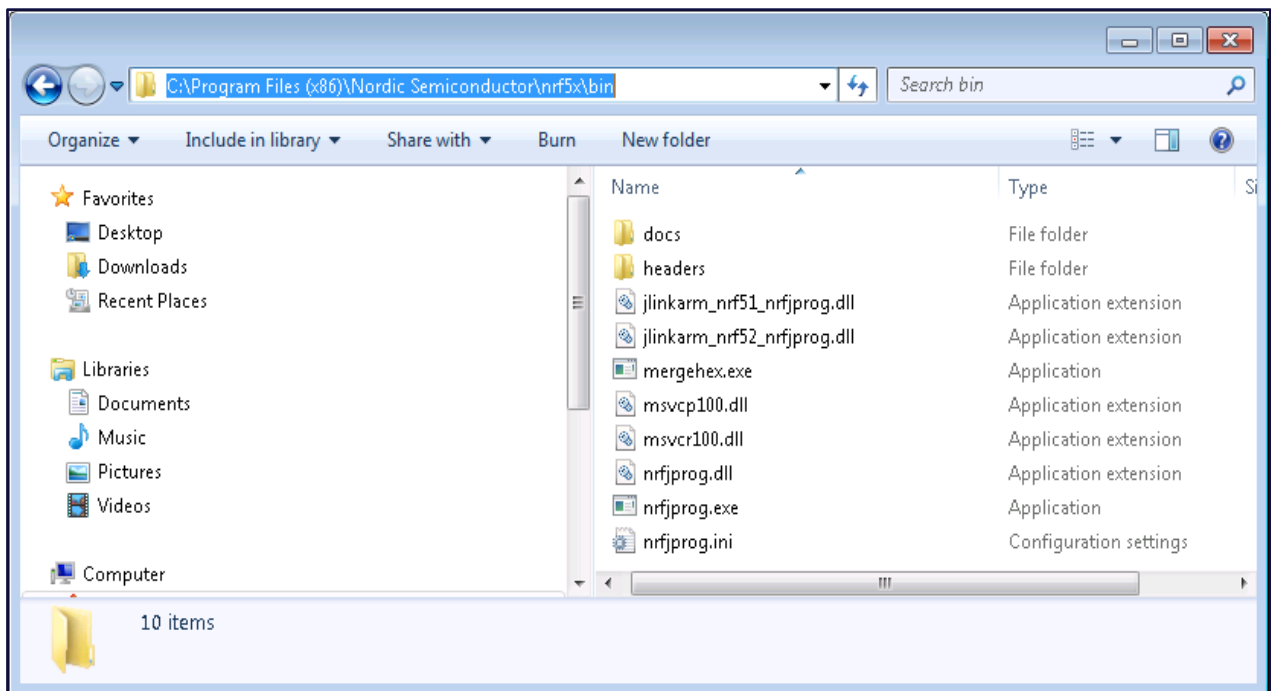


Figure 4: Location of `nrfjprog.exe`

## 3.3 Eclipse

Eclipse is a universal, highly customizable IDE, C code browser, and an efficient editor. It is a free software based on Java. Please note that it is important to download the package that comes with the CDT C/C++ development tools plugin. Usually no installation is required for Eclipse. Once downloaded (and unzipped), *eclipse.exe* can be launched straight away.

### 3.3.1 Eclipse Initial Setup

The following steps are required to setup Eclipse appropriately:

1. If not already installed, download and install the Java Runtime Environment from <http://www.java.com>

---

**Note:** For 64-bit systems, please ensure that the bit-version of java matches that of eclipse, i.e. both should be 32-bit or 64-bit.

---

2. Download the Eclipse IDE for C/C++ from <http://www.eclipse.org/downloads/packages/eclipse-ide-cc-developers/junosr2> (the download link should appear on the right-hand-side of the web page)

---

**Note:** There are many different packages and types of Eclipse and each has its unique features and goes through a different installation process. While all packages should work similarly, the installation of the juno package is highly recommended, as it is used for the examples in this guide.

---

3. Extract the zip file into a folder in the same download location.
4. Move the folder to a known location, e.g.:  
*D:\Work\Eclipse* (Figure 5).

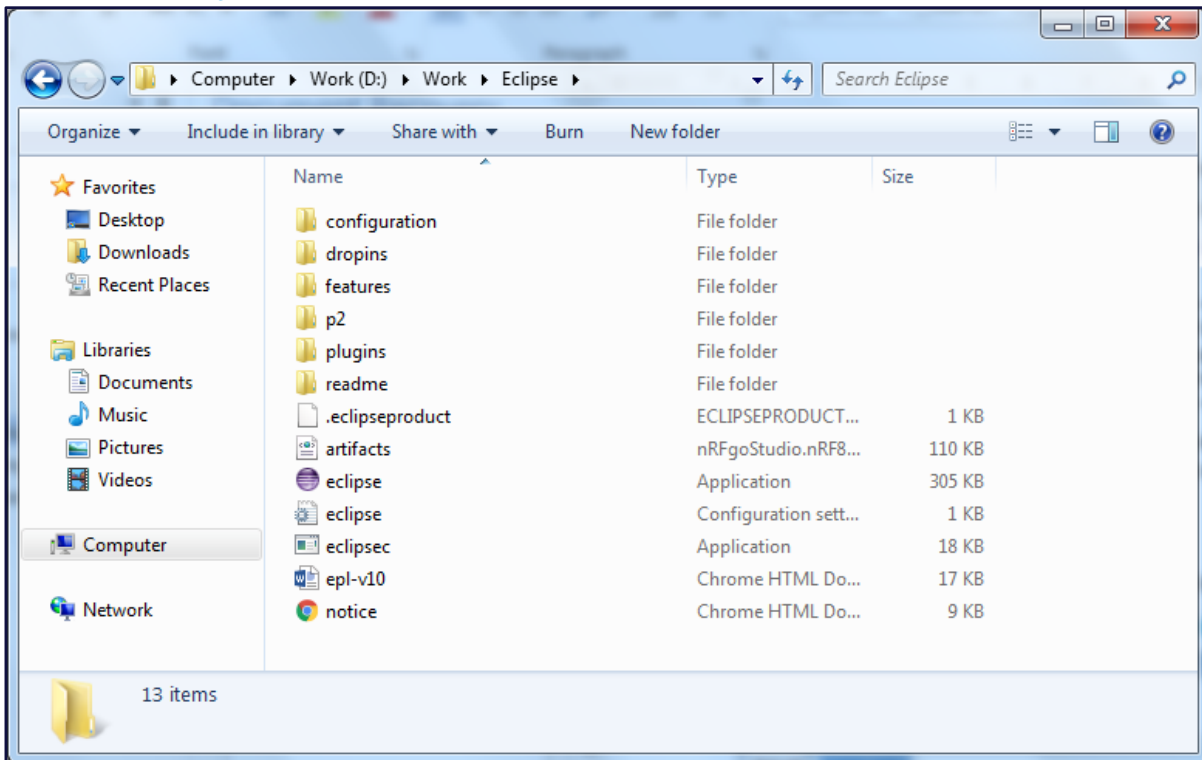


Figure 5: Location of *eclipse.exe*

- Once moved, launch the Eclipse executable (Application). Use the default Workspace when prompted (Figure 6).

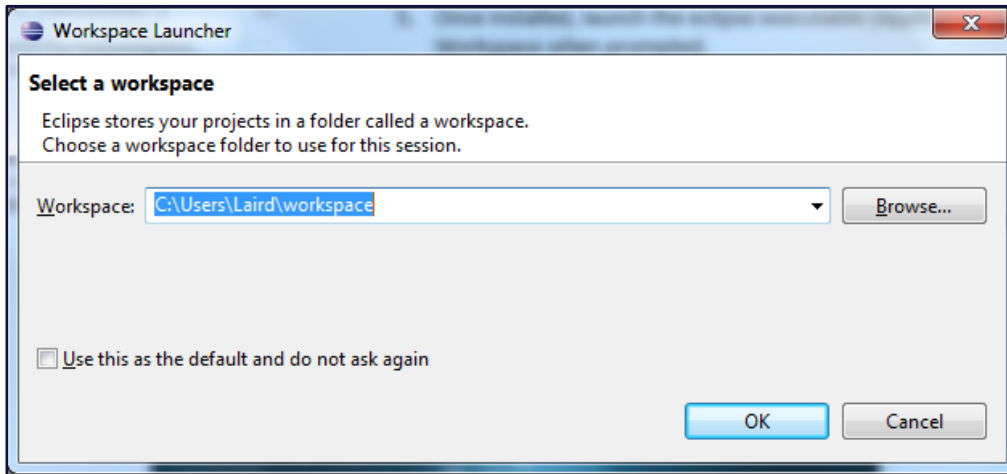


Figure 6: Eclipse default workspace

### 3.3.2 Eclipse Debugging Tools

To install the Eclipse hardware GDB tools, complete the following steps:

- From Eclipse, click **Help > Install New Software** (Figure 7).

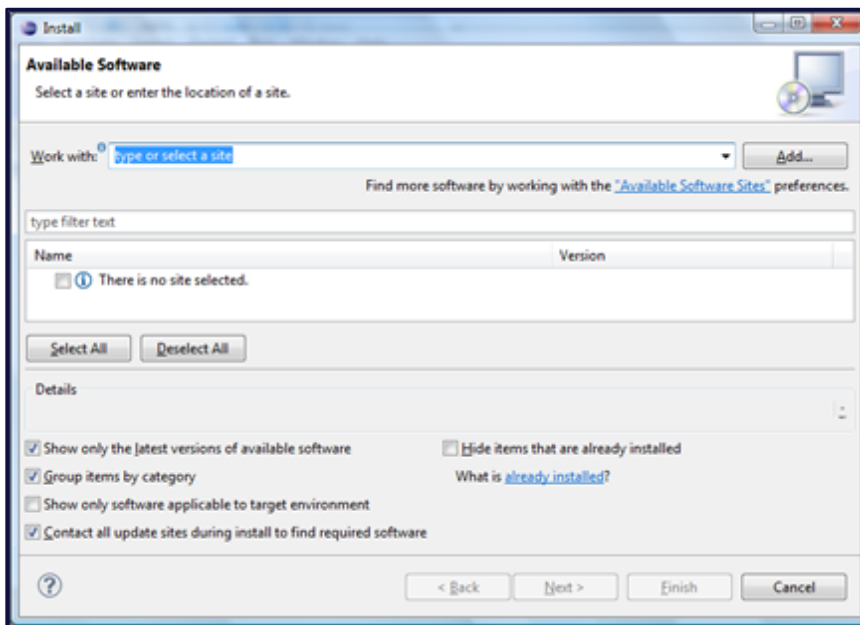


Figure 7: New Software installation window

- Add the following URL to the repository list (the field labeled *Work with*): <http://download.eclipse.org/tools/cdt/releases/juno>. The main items window will populate with new software packages from this repository.

3. Check CDT Main Features and GDB Hardware Debugging (Figure 8).

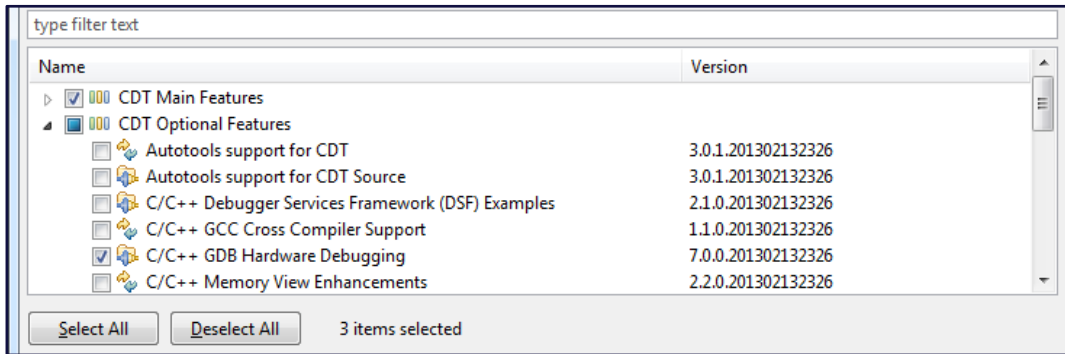


Figure 8: New software selected

4. Click **Next**.
5. Proceed through the installation by clicking **Next** in the windows that follow (Figure 9).

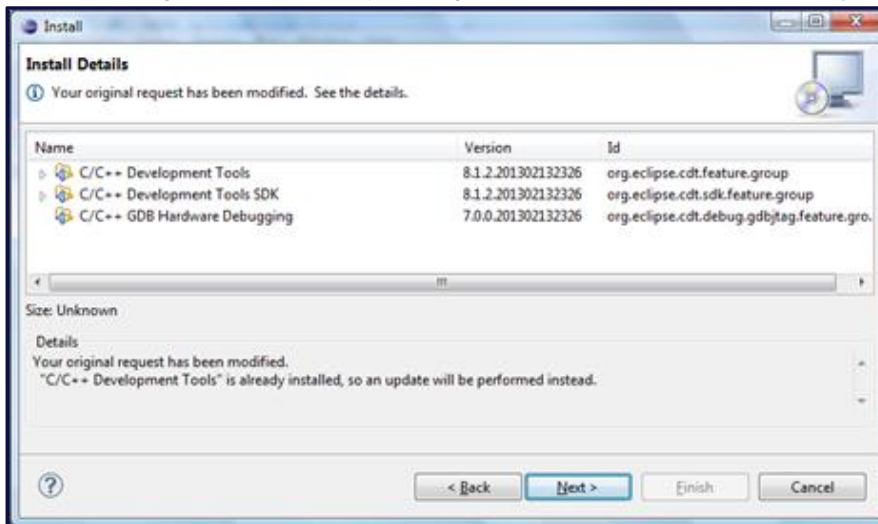


Figure 9: Completing installation

6. Once the installation is complete, you might need to restart Eclipse for the changes to take effect.

### 3.3.3 Eclipse Embedded System Register View

To install the embedded system register view, complete the following steps:

1. From Eclipse, click **Help > Install New Software**.
2. Add the following URL to the repository list (the field labeled *Work with*): <http://embsysregview.sourceforge.net/update>. The main items window populates with new software packages from this repository.

---

**Note:** If embsysregview does not appear in the window, your firewall may be preventing you from accessing the download page. Please check your firewall settings.

---

3. Select and install **embsysregview** (Figure 10).

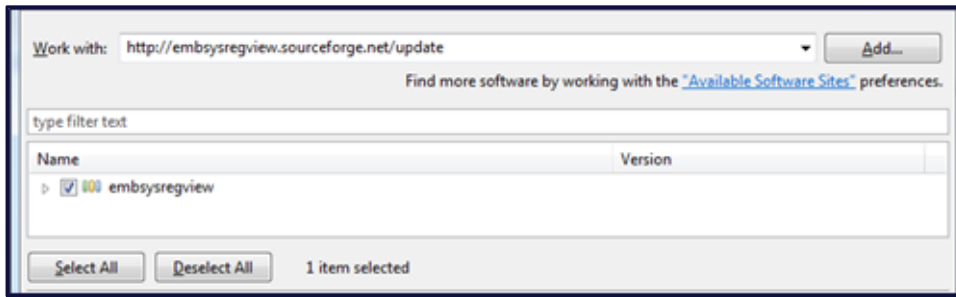


Figure 10: Installing embsysregview

4. Click **Next**.
5. Proceed through the installation.
6. Once the installation is complete, you might need to restart Eclipse for the changes to take effect.
7. To install the register view file for Nordic Semiconductor devices, copy file nrf52840.svd as follows:
  - From: `\nRF5_SDK\modules\nrfx\mdk`
  - To: `\eclipse\plugins\org.eclipse.cdt.embsysregview_<version>\data\SVD\CMSIS\Nordic`

You may need to create the Nordic folder if it does not already exist.

### 3.4 GNU ARM Toolchain Setup

The GNU ARM toolchain contains tools for building and debugging the project, such as GCC and GDB. To setup the toolchain, complete the following steps:

1. Download the *installer* package for your operating system from the following link:  
<https://developer.arm.com/tools-and-software/open-source-software/developer-tools/gnu-toolchain/gnu-rm/downloads>
2. Launch the executable.
3. Select the Destination folder to be a known location, e.g.: `D:\Work\Tools\ARM_GNU`

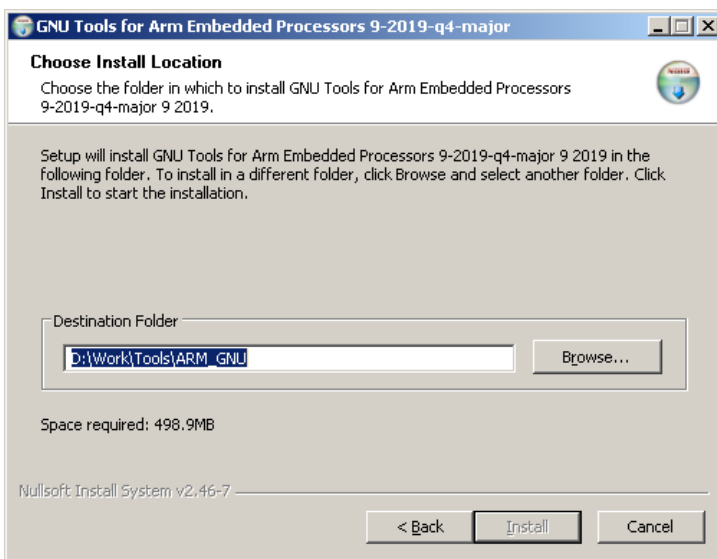


Figure 11: Installing GNU Tools for ARM Embedded Processors

4. Select **Install**.

To use the toolchain executables from any directory, their location needs to be added to the PATH environment variable. Add the executables to the PATH environment variable by doing the following:

1. Right-click **Computer > Properties**.
2. Select **Advanced system settings**.
3. Select **Environment Variables**.
4. In the System variables section, select **Path** and click **Edit...**

5. Add the location of the GNU ARM executables preceded by a semicolon (;), e.g.:  
;D:\Work\Tools\ARM\_GNU\bin
6. Open the command prompt (if already open, cmd must be reopened) and confirm that the ARM toolchain is set up correctly by typing:

```
arm-none-eabi-gcc -version
```

The above command should return the version number of ARM GCC. If it doesn't, then this means that the ARM toolchain location was not added to the PATH variable successfully (Figure 12).

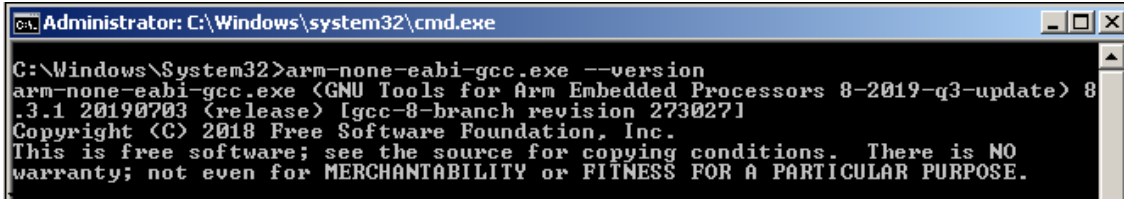


Figure 12: Using ARM GCC through the command prompt

The location and version of the ARM GNU toolchain executables also need to be added as a one-off setup to be used by the Nordic Makefiles. To do this, complete the following steps:

1. Open the file `D:\Work\RF5_SDK\components\toolchain\gcc\Makefile.windows`
2. For `GNU_INSTALL_ROOT`, add the location of the 'bin' folder, e.g.:  
`D:\Work\Tools\ARM_GNU\`
3. For `GNU_VERSION`, add the version of the toolchain (obtained from Step 7 above), e.g. 8.3.1.

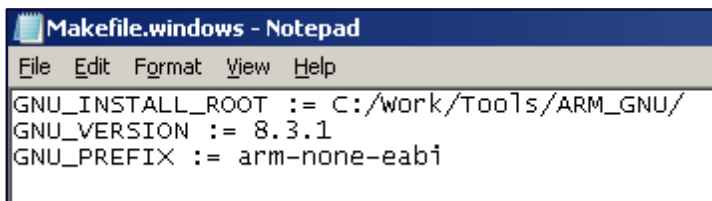


Figure 13: Adding ARM GCC to Makefile.windows

## 3.5 GNU Make Utility Setup

The GNU Make Utility allows the build of the project using a Makefile. This means that project settings in Eclipse will not affect the build process and that the project is self-contained through the Makefile. To setup the Make utility, complete the following steps:

1. Download the Windows installer file from the following link: <https://sourceforge.net/projects/gnuwin32/files/make/>
2. Launch the executable
3. Select the Destination Location to be a known folder, e.g.: `D:\Work\Tools\Make` (Figure 14)

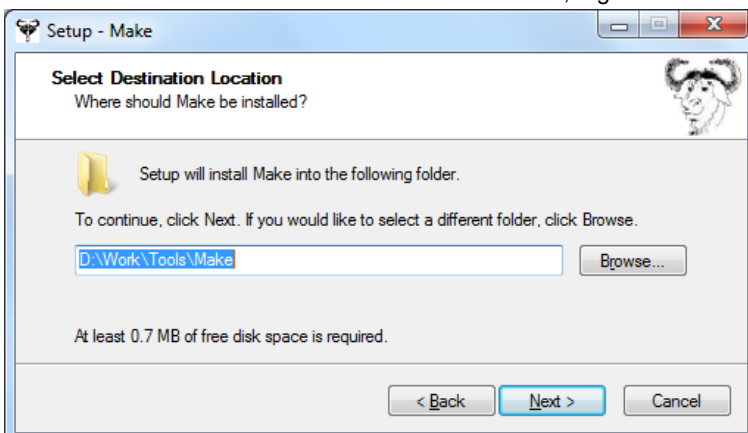


Figure 14: Installing Make utility



4. Proceed through the installation by clicking **Next** until the installation is complete.

**Note:** Some versions of MAKE prompt you to add the toolchains to the PATH variable. If this is the case, then select this option and skip to the next section.

To use Make from any folder, add the GNU Make executable to the PATH environment variable by doing the following:

1. Right-click **Computer > Properties**.
2. Select **Advanced system settings**.
3. Select **Environment Variables**.
4. In the System variables section, select **Path** and click **Edit...**
5. Add the location of the GNU Make utility executable preceded by a semicolon (;), e.g.:  
;D:\Work\Tools\GnuWin32\bin
6. Open the command prompt (if already open, cmd must be reopened) and confirm that Make is set up correctly by typing:

```
make --version
```

The above command should return the version number of make. If it doesn't, then this means that the make executable location was not added to the PATH variable successfully (Figure 15).

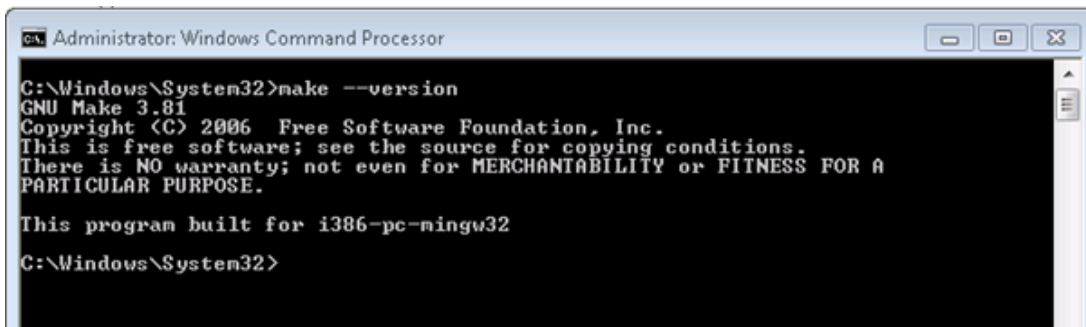


Figure 15: Using GNU Make through the command prompt

## 3.6 GNU CoreUtils for Windows

Due to the use of UNIX shell commands in the SDK makefiles, the GNU CoreUtils package must be installed for these commands to work. To do this, complete the following steps:

1. Download the CoreUtils Binaries zip file from <http://gnuwin32.sourceforge.net/packages/coreutils.htm>
2. Extract the files into a known folder, e.g.: D:\Work\Tools\CoreUtils

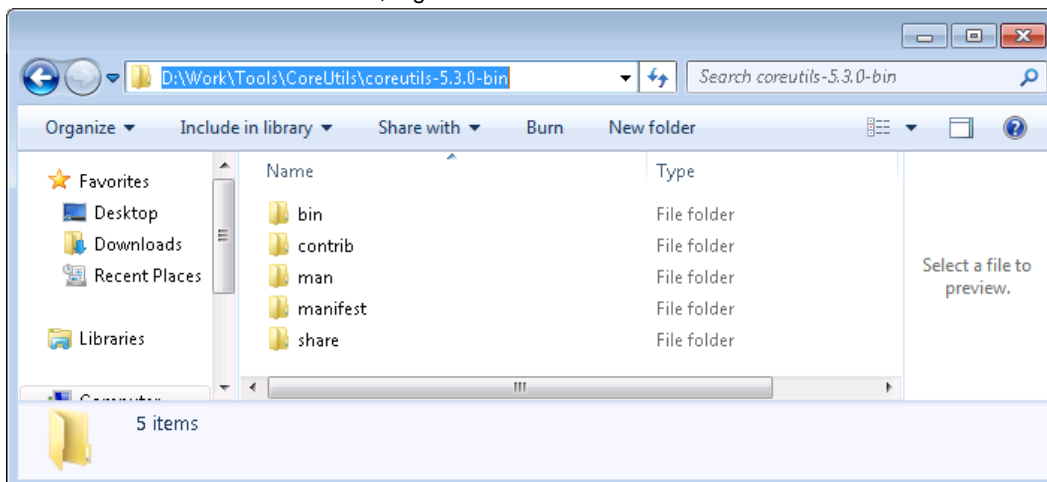


Figure 16: CoreUtils binaries location

To use CoreUtils from any folder, add the GNU CoreUtils binaries to the PATH environment variable by doing the following:

1. Right-click **Computer > Properties**.
2. Select **Advanced system settings**.
3. Select **Environment Variables**.
4. In the System variables section, select **Path** and click **Edit...**
5. Add the location of the GNU Make utility executable preceded by a semicolon (;), e.g.:  
;D:\Work\Tools\CoreUtils\coreutils-5.4.0-bin\bin
6. Open the command prompt (if already open, cmd must be reopened) and confirm that the CoreUtils are set up correctly by typing:

```
rm --version
```

The above command should return the version number of rm. If it doesn't, then this means that the CoreUtils binaries location was not added to the PATH variable successfully (Figure 17).

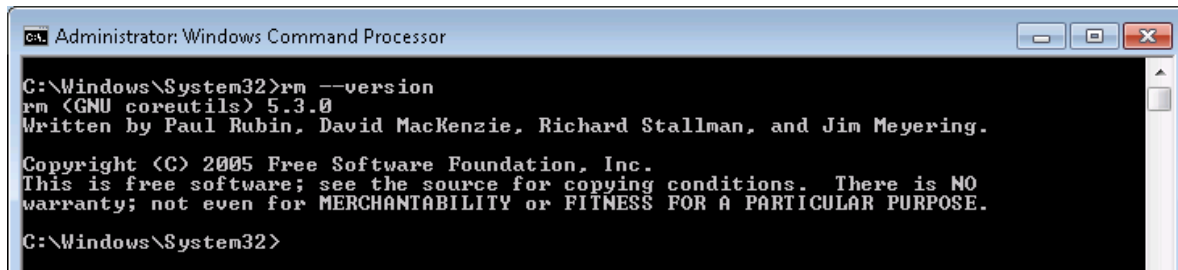


Figure 17: Using CoreUtils through the command prompt

## 4 BUILDING AND DEBUGGING SDK EXAMPLES

### 4.1 Example of Building the HRS

In the next steps, we import and configure an existing HRS application. This sample HRS application comes as part of the nRF5 SDK.

1. Launch Eclipse.
2. Create a new project by selecting **File > New > C Project**.
3. In the Project name field, type **hrs**.
4. From the Project type section, select **Makefile project > Empty Project**. In the Toolchains section select – **Other Toolchain** –.
5. Click **Finish**. The project should now appear on the Project Explorer tab on the left (Figure 18).

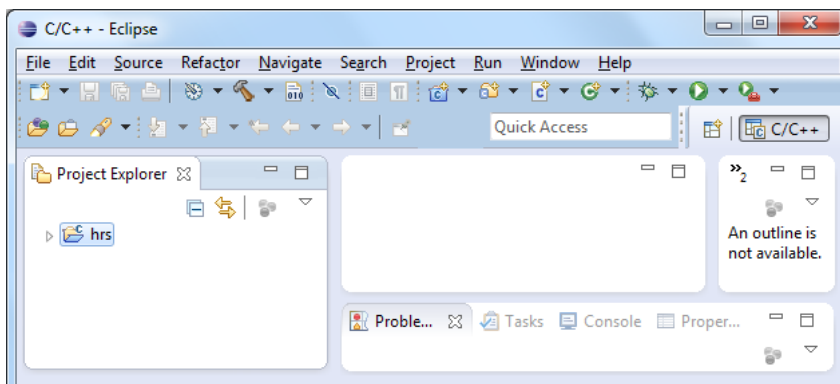


Figure 18: Creating project in Eclipse

6. Right click on the project (hrs) and select **New->Folder**.
7. Click the Advanced button at the bottom of the Window.

8. Select **Link to alternate location (Linked Folder)** and browse to the location of the hrs project, e.g.: `D:\Work\hRF5_SDK\examples\ble_peripheral\ble_app_hrs` (Figure 19).

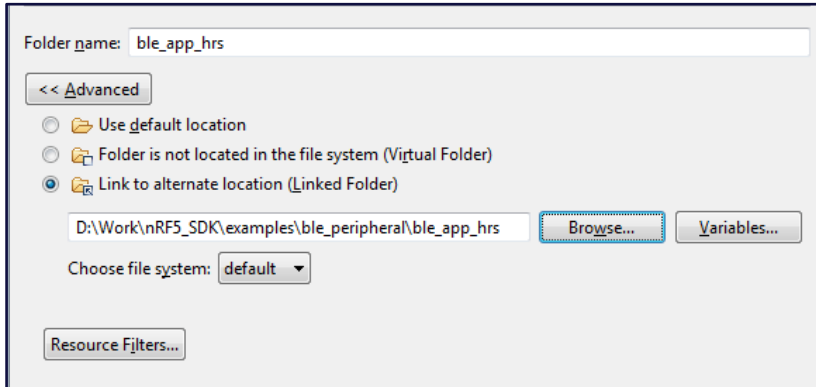


Figure 19: Adding files and folders to the project

9. The header and source files should now appear within the project (Figure 20).

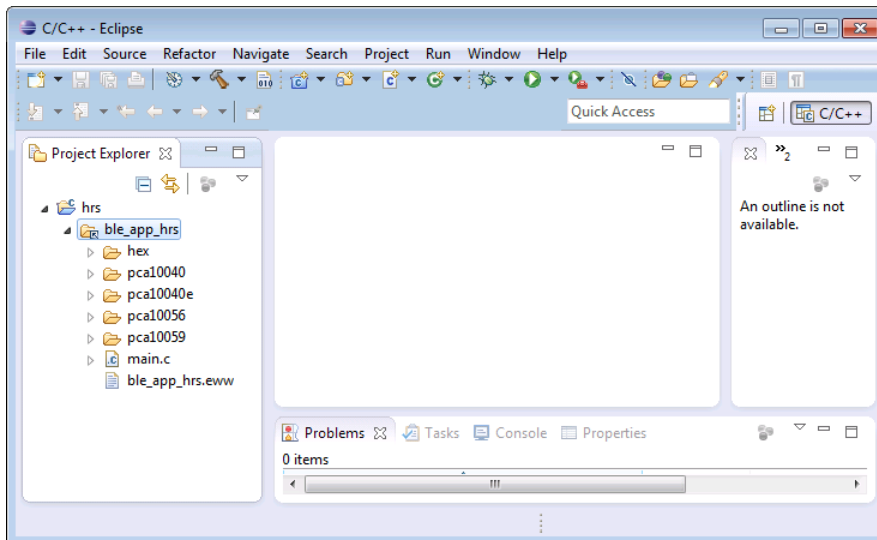


Figure 20: Project files and folders added in Project Explorer

10. Right-click on the project (hrs) and select **Properties**. Select the **C/C++ Build** section.
11. Under the **Builder Settings** tab In the **Build directory** field, type the location of the Makefile that is used to build the project, e.g.: `D:\Work\hRF5_SDK\examples\ble_peripheral\ble_app_hrs\pca10056\ls140\armgcc` (Figure 21).

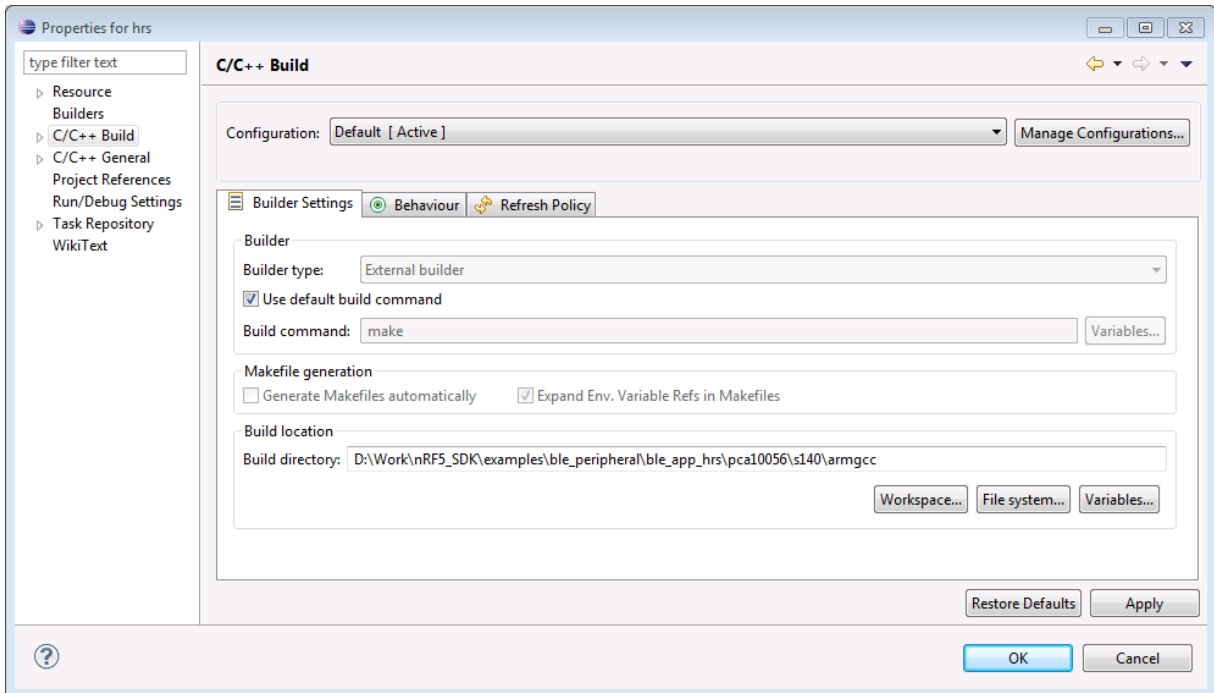


Figure 21: Adding Makefile location to project properties

12. Select **OK**.
13. You can now build the project by clicking **Project > Build All**. Alternatively, click the Build button or **CTRL+B**.
14. Once the project is built, the hex and binary files are generated as shown in the figure below (Figure 22).

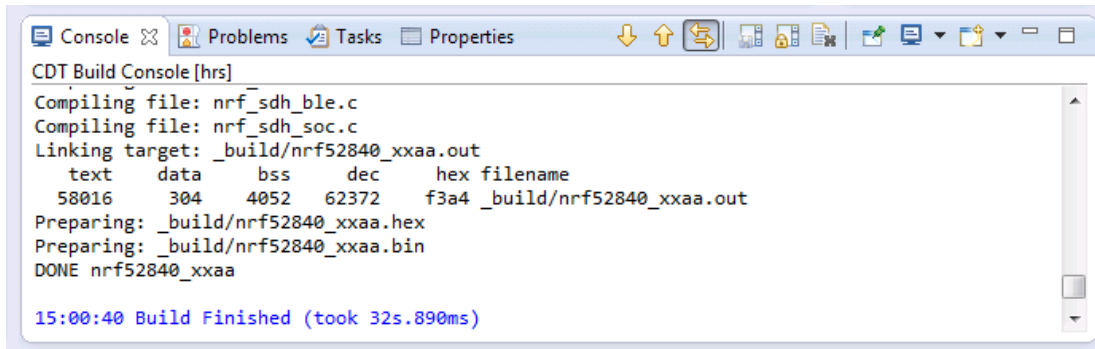


Figure 22: Building the HRS example

## 4.2 Flashing the HRS example

Connect the BL654 to the PC through USB2 port on the development kit (Figure 23).

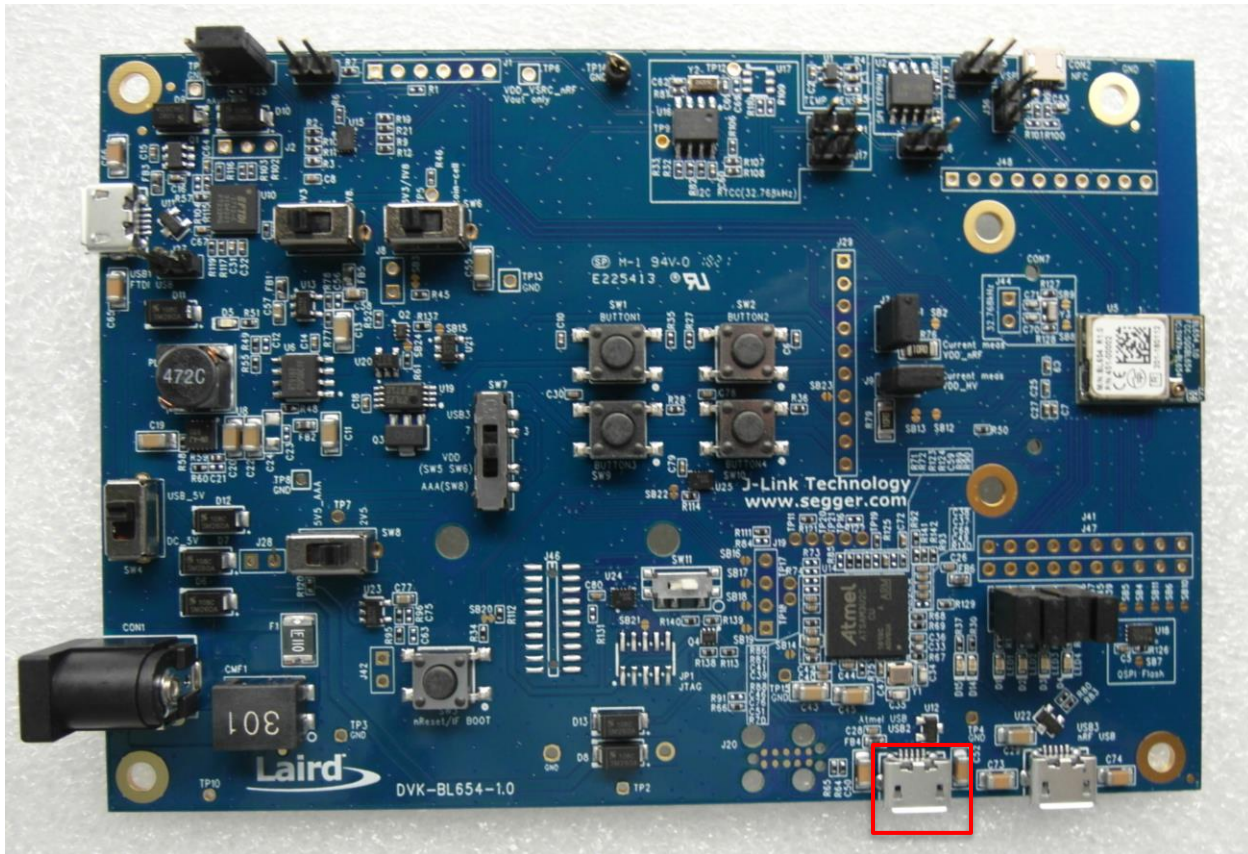


Figure 23: Connecting BL654 to PC through USB2 port

Flash downloading to the BL654 must be performed through the external toolchain configuration in Eclipse. For the hrs project, four external commands need to be added:

### 4.2.1 Erase

1. In Eclipse, select **Run > External Tools > External Tools Configuration...**
2. Right click **Program > New**. In the Name field type *Erase*.
3. In the Location field, type the path of the latest version of *nrfjprog.exe*. This is usually located in the Nordic Semiconductor folder in Program Files e.g.:  
`C:\Program Files (x86)\Nordic Semiconductor\nrf5x\bin\nrfjprog.exe`
4. In the Arguments field, type `-f NRF52 --eraseall`
5. Switch to the Build tab and deselect **Build before launch**.
6. Click **Apply**, then click **Run** (Figure 24).

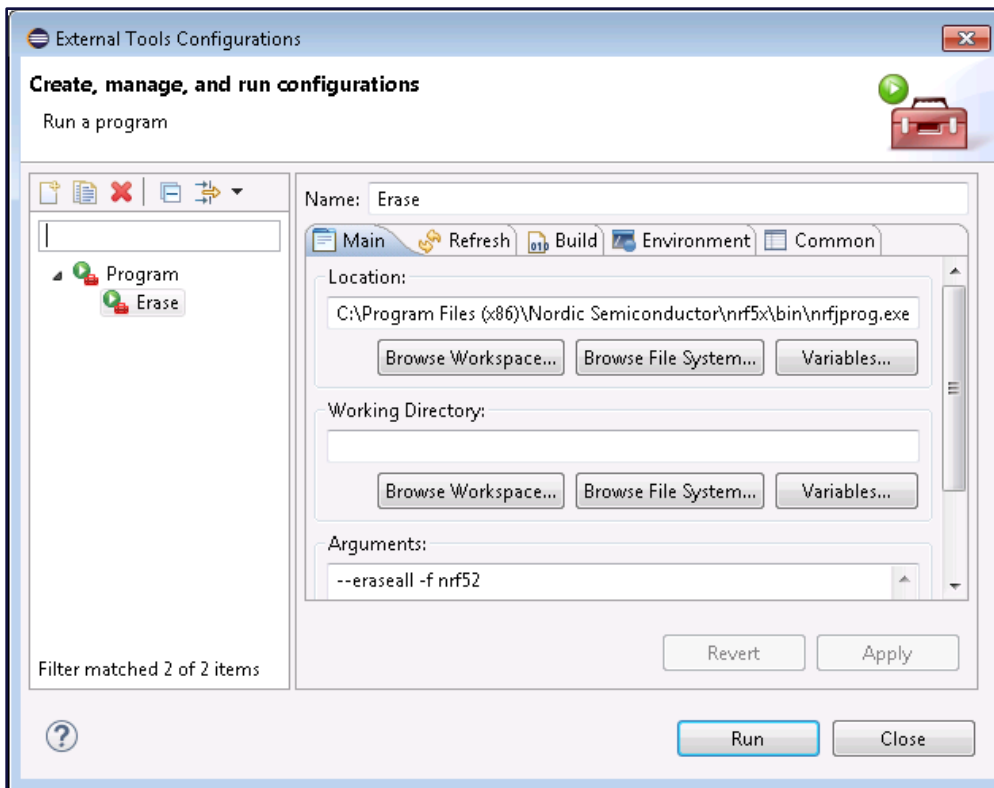


Figure 24: Adding Erase to External Tools Configurations

## 4.2.2 Flash Softdevice

1. Select **Run > External Tools > External Tools Configuration...**
2. Right click on **Program > New**. In the Name field, type *Flash\_Softdevice*.
3. In the Location field, type the path of the latest version of *nrfjprog.exe*. This is usually located in the Nordic Semiconductor folder in Program Files e.g.:  
*C:\Program Files (x86)\Nordic Semiconductor\nrf5x\bin\nrfjprog.exe*
4. In the Working Directory, enter the directory where the hex file of the softdevice is located. This is located in  
*D:\Work\NRF5\_SDK\components\softdevice\s140\hex*
5. In the Arguments field, enter the `--program` command followed by the name of the hex file and the device family argument. e.g.:  
*-f NRF52 --program s140\_nrf52\_7.0.1\_softdevice.hex*
6. Switch to the Build tab and deselect **Build before launch**.
7. Click **Apply**, then click **Run** (Figure 25).



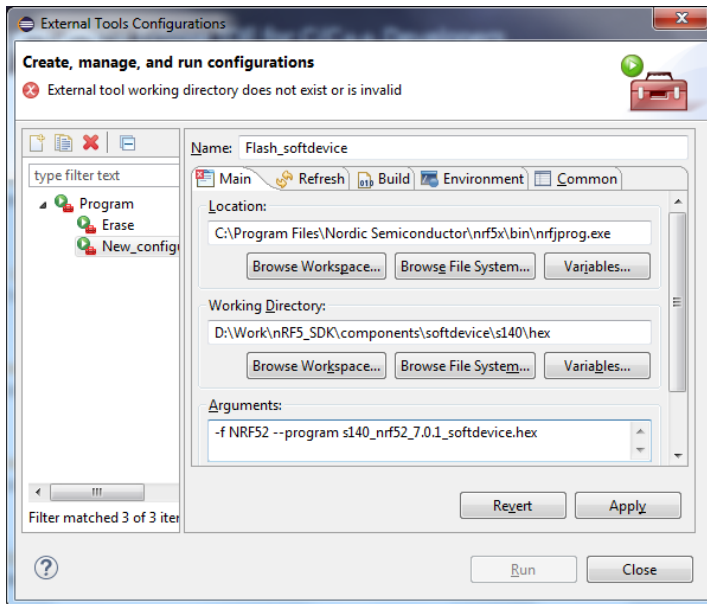


Figure 25: Adding *Flash\_softdevice* to External Tools Configurations

### 4.2.3 Flash BL654

1. Select **Run > External Tools > External Tools Configuration...**
2. Right-click **Program > New**. In the Name field type *Flash\_hrs*.
3. In the Location field, type the path of the latest version of *nrfjprog.exe*. This is usually located in the Nordic Semiconductor folder in Program Files e.g.:  
*C:\Program Files (x86)\Nordic Semiconductor\nrf5x\bin\nrfjprog.exe*
4. In the Working Directory, enter the name of where the generated \*.hex file is located, e.g.:  
*D:\Work\NRF5\_SDK\examples\ble\_peripheral\ble\_app\_hrs\pca10056\s140\armgcc\\_build*
5. In the Arguments field, type command used for programming the devkit. E.g.:  
*-f NRF52 --program nrf52840\_xxaa.hex*
6. Switch to the Build tab and deselect **Build before launch**.
7. Click **Apply** and then **Run**.

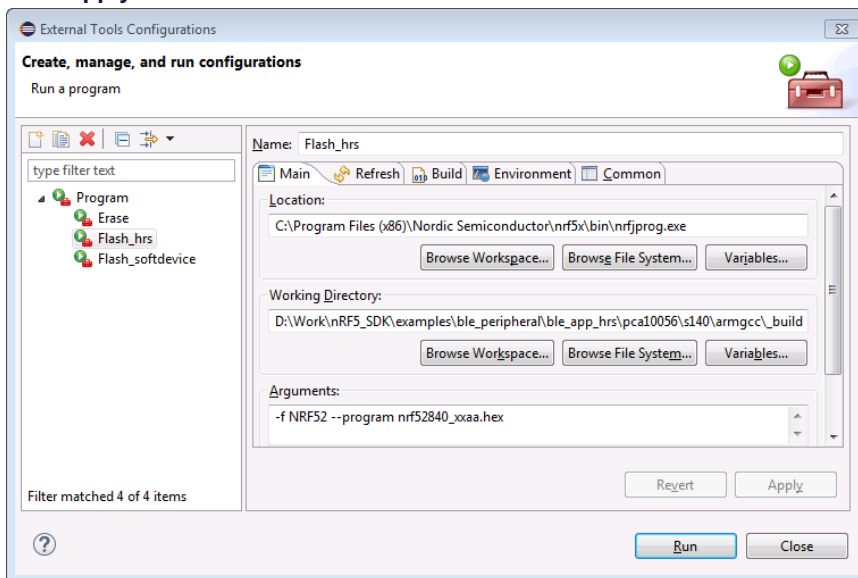


Figure 26: Adding *Flash\_hrs* to External Tools Configurations

## 4.2.4 Reset

1. Select **Run > External Tools > External Tools Configuration...**
2. Right-click **Program > New**. In the Name field type *Reset*.
3. In the Location field, type the path of the latest version of *nrfjprog.exe*. This is usually located in the Nordic Semiconductor folder in Program Files e.g.:  
`C:\Program Files (x86)\Nordic Semiconductor\nrf5x\bin\nrfjprog.exe`
4. In the Arguments field, type `-f NRF52 --reset`
5. Switch to the Build tab and deselect **Build before launch**.
6. Click **Apply** and then click **Run** (Figure 27).

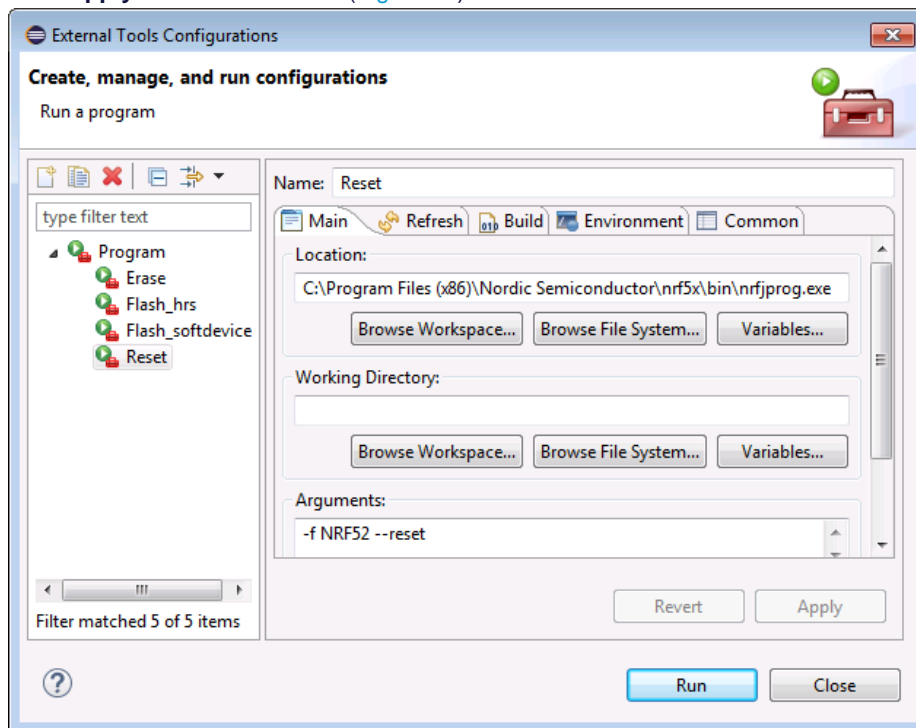


Figure 27: Adding Reset to External Tools Configurations

Once this is done and setup, you can now erase and flash the hrs app onto the module as follows:

1. **Run > External Tools > Erase**
2. **Run > External Tools > Flash\_Softdevice**
3. **Run > External Tools > Flash\_hrs**
4. **Run > External Tools > Reset**

Alternatively, the shortcut button for external tool configuration can be used.



## 4.3 Debugging the HRS Example

Debugging an application on the BL654 allows you to see what is going on inside the program while it runs. This can help detect problems and issues, as well as show the values of the variables and the flow of the program at different stages. In order to debug the hrs application, complete the following steps:

1. In Eclipse, select **Run > Debug Configurations**
2. Right click **GDB-SEGGER J-Link Debugging > New**

**Note:** If GDB SEGGER J-Link Debugging does not appear as one of the Debug Configurations options, then it has not been installed properly as part of nRF5x-Command-Line-Tools. You might need to install the J-Link Software from <https://www.segger.com/downloads/jlink>. Also ensure that the **Eclipse Debugging Tools** are installed properly.

3. In the Name field, specify the name of the debugging option, e.g. *hrs*.
4. In the Project field, specify the name of the project being debugged, e.g. *hrs*.
5. In the C/C++ Application field, provide the location of the \*.out file. This is usually in the *\_build* folder of the SDK example, e.g.:  
`D:\Work\nRF5_SDK\examples\ble_peripheral\ble_app_hrs\pca10056\s140\armgcc\_build\nrf52840_xxaa.out`
6. Select **Disable auto build** (Figure 28).

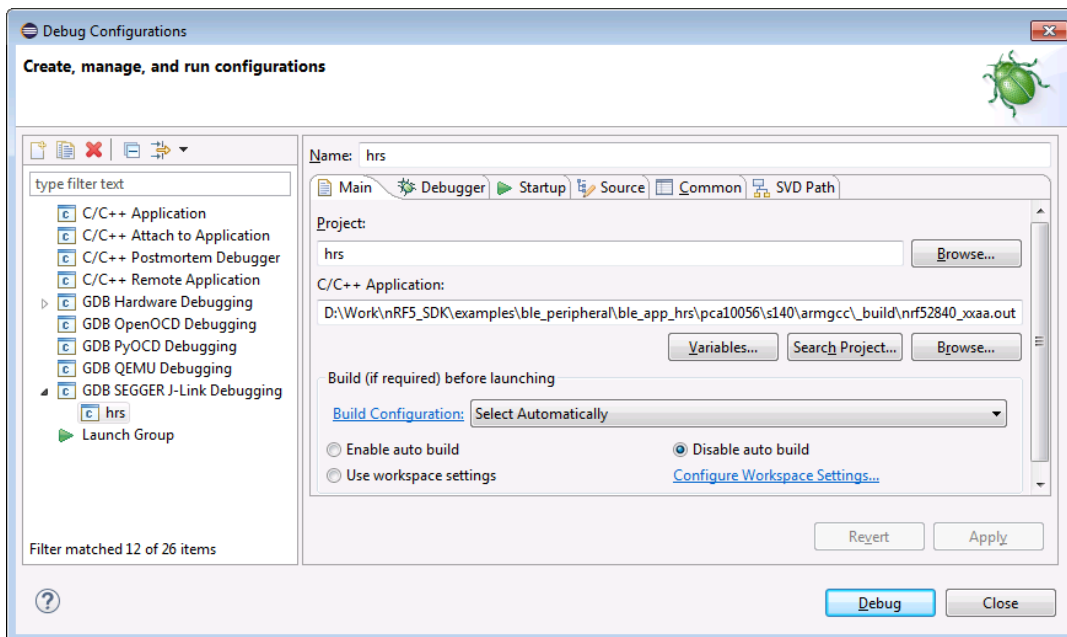


Figure 28: Debug Configurations for the hrs app

7. Switch to the Debugger tab.
8. In the Device name, enter *Cortex-M4*.
9. Scroll down until you see *GDB Client Setup*.
10. In the Executable field, enter the following: *arm-none-eabi-gdb.exe* (Figure 29).

**Note:** If there is more than one device connected, ensure that the BL654's Segger Serial Number is specified in the **USB serial** field in the Debugger tab.

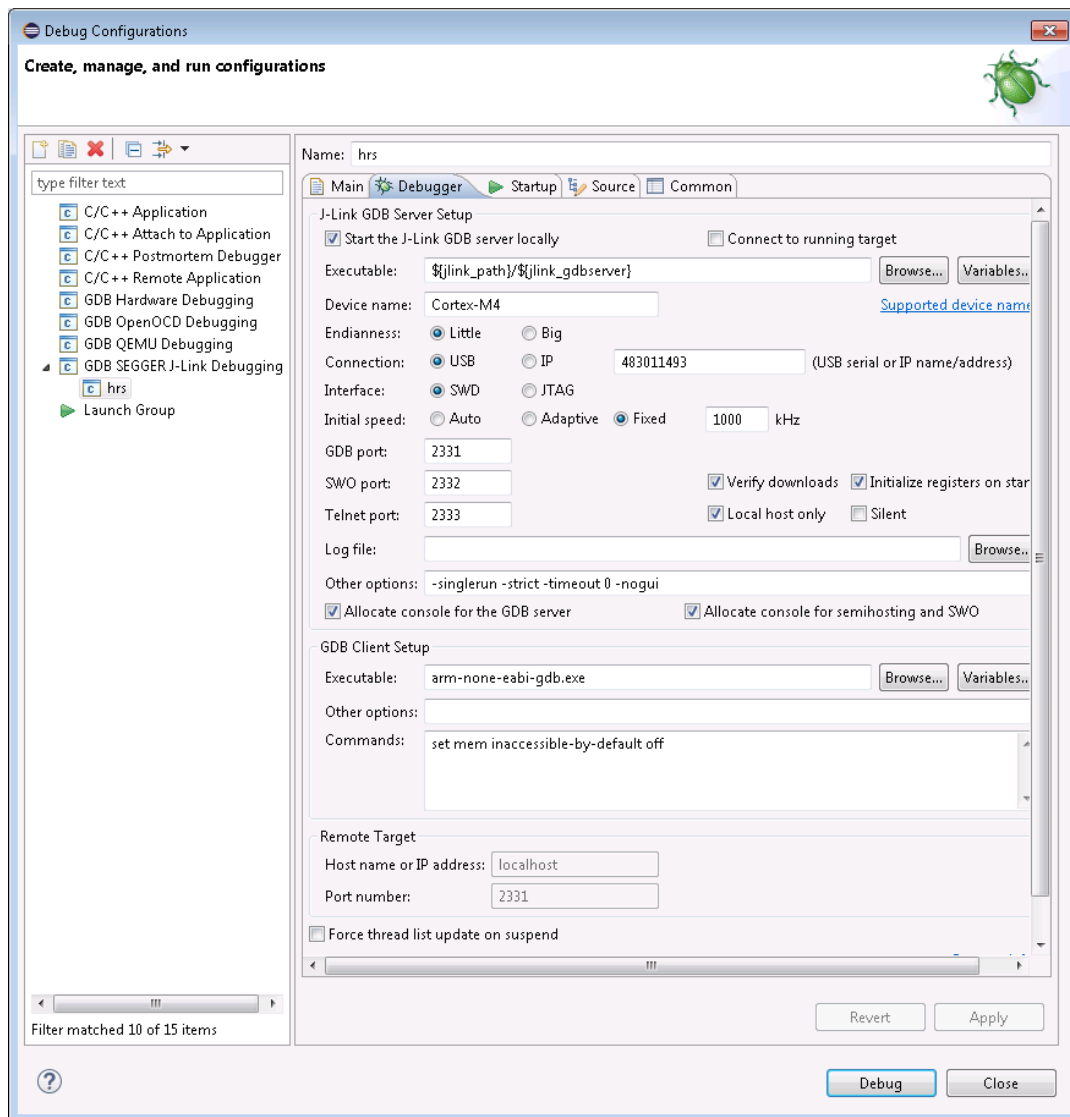


Figure 29: Debugger tab in the Debug Configurations for the hrs app

11. Click **Apply**, then click **Debug**.
12. You should now be in the debug view. You can step over, step into, and add breakpoints through the Run from the toolbar (Figure 30).

```

1018
1019 /**@brief Function for application main entry.
1020 */
1021 int main(void)
1022 {
1023     bool erase_bonds;
1024
1025     // Initialize.
1026     log_init();
1027     timers_init();
1028     buttons_leds_init(&erase_bonds);
1029     ble_stack_init();
1030     gap_params_init();
1031     gatt_init();
1032     advertising_init();
1033     services_init();
1034     sensor_simulator_init();
1035     conn_params_init();
1036     peer_manager_init();
1037
1038     // Start execution.
1039     NRF_LOG_INFO("Heart Rate Sensor example started.");
1040     application_timers_start();
1041
1042     advertising_start(erase_bonds);
1043
1044     // Enter main loop.
1045     for (;;)
1046     {
1047         if (NRF_LOG_PROCESS() == false)
1048         {
1049             power_manage();
1050         }
1051     }
1052 }

```

Figure 30: Debugging hrs application

## 5 REFERENCE

Further information relating to different utilities used in this app note can be found here:

- BL654 Product Page - <https://www.lairdconnect.com/wireless-modules/bluetooth-modules/bluetooth-5-modules/bl654-series-bluetooth-module-nfc>
- Make - <https://www.gnu.org/software/make/>
- ARM Toolchain - <https://launchpad.net/gcc-arm-embedded>
- Eclipse - <https://eclipse.org/org/>
- Nordic Tutorial on using Eclipse and GCC - <https://devzone.nordicsemi.com/tutorials/b/getting-started/posts/development-with-gcc-and-eclipse>
- Nordic Blog on using Eclipse and GCC - <https://devzone.nordicsemi.com/b/blog/posts/development-with-eclipse-and-gcc>

## 6 REVISION HISTORY

Version	Date	Notes	Contributor(s)	Approver
1.0	27 Nov 2019	Separated from v11 and v14 document. Updated for SDK v16	Jamie McCrae	Jonathan Kaye