

3 dBd VHF Fiberglass Antenna Mounting Instructions

Laird Fiberglass Antennas are designed to provide years of trouble-free service with superior performance at a competitive price. Please follow these simple guidelines to get the most value from your installation:

- Mount your antenna with an FM2 mounting kit following accurately the dimensions shown (FM2 is available separately).
- When installing a 3 dBd gain or higher model always use two clamps. Two clamps are provided in each FM2 mounting kit.
- During positioning of your antenna be sure that the gold anodized sleeve clears any obstructions (i.e.: masts, tower section, etc.).
- For optimum antenna performance, mount the antenna as shown in figure 1. All installations should be performed by a trained professional.



Figure 1

See reverse side for all other fiberglass models.

NOTICE: DO NOT COVER THE DRAIN HOLES ON THE BOTTOM OF THE ANTENNA AS THEY PROVIDE DRAINAGE FOR MOISTURE.

3 dBd VHF Fiberglass Antenna Mounting Instructions

Laird Fiberglass Antennas are designed to provide years of trouble-free service with superior performance at a competitive price. Please follow these simple guidelines to get the most value from your installation:

- Mount your antenna with an FM2 mounting kit following accurately the dimensions shown (FM2 is available separately).
- When installing a 3 dBd gain or higher model always use two clamps. Two clamps are provided in each FM2 mounting kit.
- During positioning of your antenna be sure that the gold anodized sleeve clears any obstructions (i.e.: masts, tower section, etc.).
- For optimum antenna performance, mount the antenna as shown in figure 1. All installations should be performed by a trained professional.



Figure 1

See reverse side for all other fiberglass models.

NOTICE: DO NOT COVER THE DRAIN HOLES ON THE BOTTOM OF THE ANTENNA AS THEY PROVIDE DRAINAGE FOR MOISTURE.

3 dBd VHF Fiberglass Antenna Mounting Instructions

Laird Fiberglass Antennas are designed to provide years of trouble-free service with superior performance at a competitive price. Please follow these simple guidelines to get the most value from your installation:

- Mount your antenna with an FM2 mounting kit following accurately the dimensions shown (FM2 is available separately).
- When installing a 3 dBd gain or higher model always use two clamps. Two clamps are provided in each FM2 mounting kit.
- During positioning of your antenna be sure that the gold anodized sleeve clears any obstructions (i.e.: masts, tower section, etc.).
- For optimum antenna performance, mount the antenna as shown in figure 1. All installations should be performed by a trained professional.

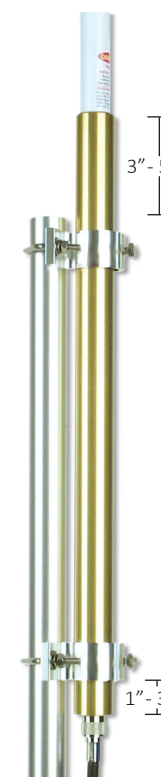


Figure 1

See reverse side for all other fiberglass models.

NOTICE: DO NOT COVER THE DRAIN HOLES ON THE BOTTOM OF THE ANTENNA AS THEY PROVIDE DRAINAGE FOR MOISTURE.

Fiberglass Antenna Mounting Instructions

Laird Fiberglass Antennas are designed to provide years of trouble-free service with superior performance at a competitive price. Please follow these simple guidelines to get the most value from your installation:

- Mount your antenna with an FM2 mounting kit as shown (available separately).
- One clamp must be placed at the center of the sleeve. The other at any point below.
- During positioning of your antenna be sure that the gold anodized sleeve clears any obstructions (i.e.: masts, tower section, etc.).
- All installations should be performed by a trained professional.



For more instructions, technical information & to register online, visit us on the web at www.lairdtech.com

NOTICE: DO NOT COVER THE DRAIN HOLES ON THE BOTTOM OF THE ANTENNA AS THEY PROVIDE DRAINAGE FOR MOISTURE.

SEE REVERSE SIDE FOR 3dBd VHF FIBERGLASS MODEL!



Fiberglass Antenna Mounting Instructions

Laird Fiberglass Antennas are designed to provide years of trouble-free service with superior performance at a competitive price. Please follow these simple guidelines to get the most value from your installation:

- Mount your antenna with an FM2 mounting kit as shown (available separately).
- One clamp must be placed at the center of the sleeve. The other at any point below.
- During positioning of your antenna be sure that the gold anodized sleeve clears any obstructions (i.e.: masts, tower section, etc.).
- All installations should be performed by a trained professional.



For more instructions, technical information & to register online, visit us on the web at www.lairdtech.com

NOTICE: DO NOT COVER THE DRAIN HOLES ON THE BOTTOM OF THE ANTENNA AS THEY PROVIDE DRAINAGE FOR MOISTURE.

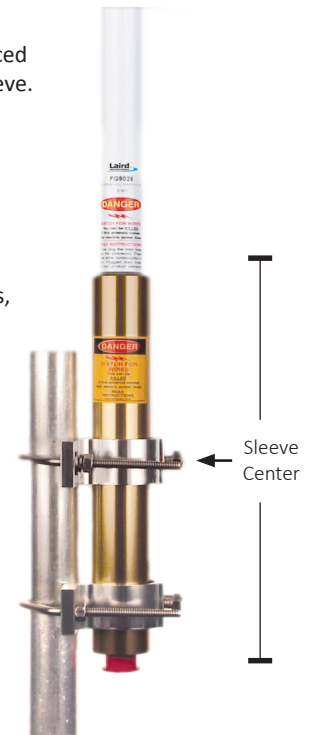
SEE REVERSE SIDE FOR 3dBd VHF FIBERGLASS MODEL!



Fiberglass Antenna Mounting Instructions

Laird Fiberglass Antennas are designed to provide years of trouble-free service with superior performance at a competitive price. Please follow these simple guidelines to get the most value from your installation:

- Mount your antenna with an FM2 mounting kit as shown (available separately).
- One clamp must be placed at the center of the sleeve. The other at any point below.
- During positioning of your antenna be sure that the gold anodized sleeve clears any obstructions (i.e.: masts, tower section, etc.).
- All installations should be performed by a trained professional.



For more instructions, technical information & to register online, visit us on the web at www.lairdtech.com

NOTICE: DO NOT COVER THE DRAIN HOLES ON THE BOTTOM OF THE ANTENNA AS THEY PROVIDE DRAINAGE FOR MOISTURE.

SEE REVERSE SIDE FOR 3dBd VHF FIBERGLASS MODEL!

