

BT900-US AUTORUN RECOVERY

Application Note

v1.0

INTRODUCTION

This guide demonstrates how to recover a BT900-US device if an autorun application has been loaded onto it and how to return the device to the factory-default settings.

REQUIREMENTS

- PC running Windows XP or later
- UwTerminal 7.0 or later (if running Windows) available from the Laird Embedded Wireless Support Center in the [BT900-US Software section](#)
- BT900-US
- FTDI Drivers <http://www.ftdichip.com/Drivers/CP.htm> (if not included on OS)
- FT_PROG <http://www.ftdichip.com/Support/Utilities.htm>

RECOVERY

To recover a BT900-US with an autorun application, follow these steps:

1. Connect the BT900-US to a spare USB port on your laptop or computer to a USB hub that can provide at least 100 mA of power.
2. Open *FT_PROG*.



Figure 1: BT900-US

3. From the Devices menu, click **Scan and Parse**.
4. In the left pane, a list of FTDI devices displays.

Note: If you have more than one connected FTDI device, ensure that the correct device is selected. Making changes to a different device may render it inoperable.

5. Expand **FT EEPROM**.
6. Select and expand **Hardware Specific**.
7. Select **Invert RS232 Signals**.
8. Check the **Invert DTR#** box to ensure the device does not automatically run applications (Figure 2).
9. From the Devices menu, select **Program** to open the Program Devices window (Figure 3).
10. In the Program Devices window, select the applicable device.

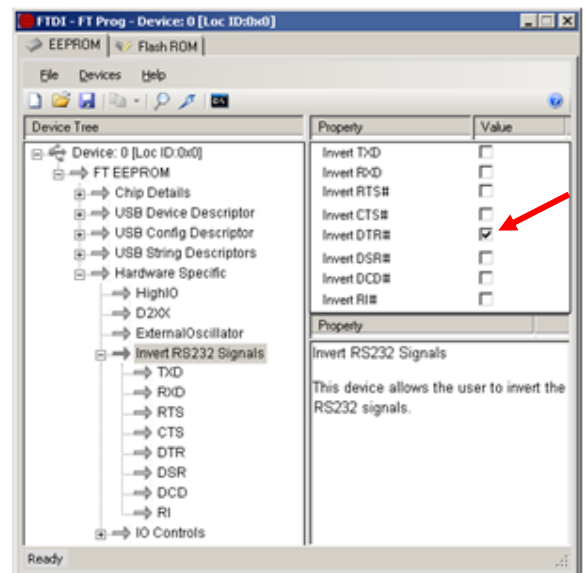


Figure 2: FT_PROG window

11. Click **Program** to update the information on the FTDI chip (Figure 3).
12. Once the process has finished, remove the BT900-US and then re-insert it.
The BT900-US is detected as a new device and installs the necessary drivers.
13. Once the drivers have been successfully installed, extract UwTerminal to a selected folder and run the program (no installation is required).

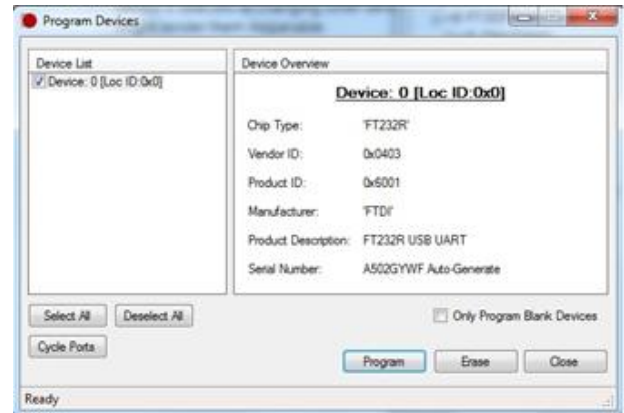


Figure 3: Program Devices window

14. Configure the applicable COM port (displayed in the Device Manager) with the following settings:
 - Baudrate – 115200
 - Parity – None
 - Stop Bits – 1
 - Data Bits – 8
 - Handshaking – CTS/RTS

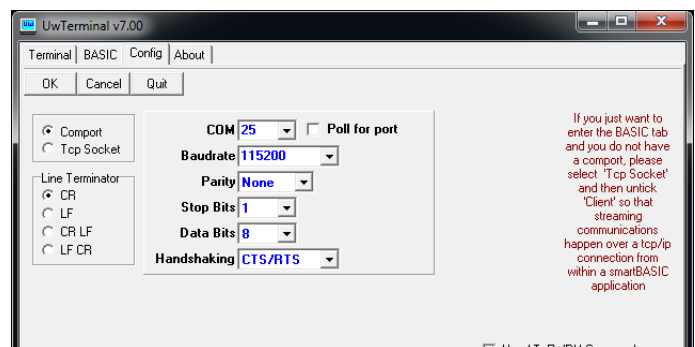


Figure 4: UwTerminal COM settings

15. Click **OK**.
16. Click **Close Port**.
17. Remove the BT900-US device and then re-insert it.
18. Quickly click **Open Port** from UwTerminal.
When the device opens successfully, it is in interactive mode.
19. To delete the autorun application, use the **at+del "\$autorun\$"** command and press **Enter**.

Note: If you are unable to communicate with the device, click **Close Port**, remove the BT900-US device, reinsert it, and click **Open Port**.

20. Once complete, close UwTerminal and return to FT_PROG.
21. Redo steps 3-12 but instead of checking the Invert DTR# checkbox, ensure it is unchecked and then reprogram the device.

The BT900-US device is now returned to its factory default state.

REVISION HISTORY

Revision	Date	Description	Approved By
1.0	22 Feb 2013	Initial Release	Jonathan Kaye