

ENABLING THE SECURITY PANE IN THE LAIRD CONFIGURATION UTILITY

Application Note

v1.0

The security pane in the Laird Configuration Utility enables EEPROM Protection and shows advanced features for radio configuration. It is typically hidden from display. To access the pane, follow these steps:

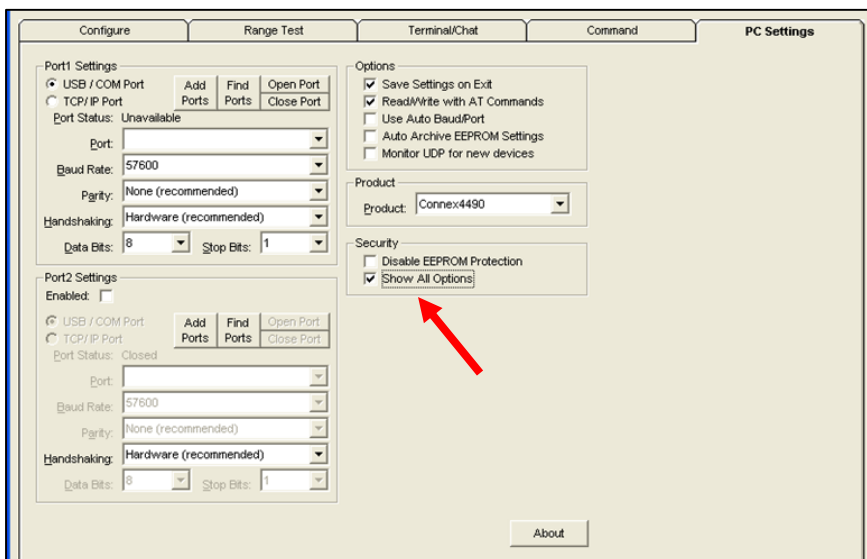
1. From the PC Settings tab, click **About**.
2. In the About window, click anywhere next to the lines of text. A blinking cursor appears.



3. Type the following in all lower case letters:
showframe!

Note: Nothing displays on the window when you type.

4. When you finish typing, a popup window declares "Security Frame now visible."
5. Click **OK** in the Wireless Configuration and Test Utility window.
6. Click **OK** in the "About" window.
7. The Security section now displays on the PC Settings tab.
8. Check the **Show All Options** check box.



9. Click the **Configure** tab. The **Radio Features** list now displays the advanced features.
10. Click **Read Radio** to populate the advanced feature settings.

REVISION HISTORY

Version	Date	Notes	Approver
1.0	03 April 2013	Initial Version	Chris Downey