

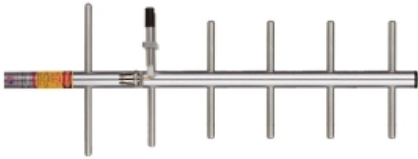


Smart Technology. Delivered.

**YS4306**

**Directional Yagi Antenna**

**430-450 MHz**



**6 ELEMENT DIRECTIONAL YAGI ANTENNA**

Laird's directional gamma matched Yagi antennas are focused on economical and high performance. This UHF yagi series has a 12.2dBi antenna gain and operates on 430-450 MHz frequency range. It is manufactured using high strength 6061-T6 aluminum to withstand heavy ice, high wind and other harsh conditions.

**FEATURES**

- Every Yagi is tuned on a network analyzer for best power match and lowest VSWR.
- All Yagi antennas ship complete with a high quality cast aluminum mounting kit that includes stainless steel hardware and allows vertical or horizontal orientation during installation. (VHF models require light assembly)

**APPLICATIONS**

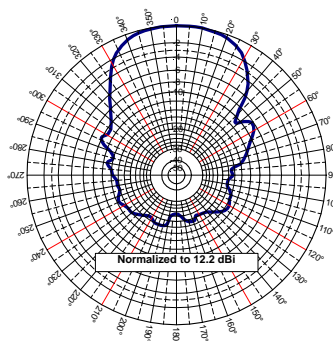
- Point to point directional and multiple point to omnidirectional outdoor antennas applications used by private organizations and government agencies around the globe.
- Typical applications include transportation such as railroad switching, remote locations reporting examples that include oil fields and weather conditions and meter data transmissions for utilities.

**MECHANICAL SPECIFICATIONS**

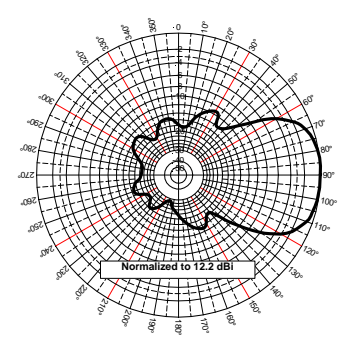
Material	Aluminum
Length	44-1/4"
Height	14-5/8"
Boom Diameter	7/8"
Weight	NA
Rated Wind Velocity	150mph (241kph)
Equivalent Flat Area	0.48115 sq. ft.
Cable	None
Termination	N-Female connector
Color	Silver Only for YS Series
Lightning Protection	Lightning Arrestor LABH350NN (Sold Separately)
Mounting	Yagi mounting Kit for 7/8" boom

**ELECTRICAL SPECIFICATIONS**

Frequency Range	430-460 MHz
VSWR	< 2:1
Return Loss	-10dB max
Nominal Gain	12.2 dBi
Front to Back Ratio	20dB
Maximum Power	300 W
Nominal Impedance	50Ω
Polarization	Vertical or Horizontal
Pattern	Directional
Horizontal Beamwidth (For Horizontal Polarization)	58°
Vertical Beamwidth (For Vertical Polarization)	67°
Tuning	Fixed Tune
Transmitting/Receiving	Both



**Elevation Pattern (Y, Z or H-Plane) Representation Pattern**



**Azimuthal Pattern (X, Y or E-Plane) Representation Pattern**

Americas: +1.847 839.6925  
IAS-AmericasEastSales@lairdtech.com

Europe: +44.1628.858941  
IAS-EUSales@lairdtech.com

Asia:  
IAS-AsiaSales@lairdtech.com

Middle East and Africa: +44.1628.858941  
IAS-MEASales@lairdtech.com

[www.lairdtech.com](http://www.lairdtech.com)

ANT-DS-YS4366 0916

Any information furnished by Laird Inc. and its agents is believed to be accurate and reliable. All specifications are subject to change without notice. Responsibility for the use and application of Laird materials rests with the end user, since Laird and its agents cannot be aware of all potential uses. Laird makes no warranties as to the fitness, merchantability or suitability of any Laird materials or products for any specific or general uses. Laird shall not be liable for incidental or consequential damages of any kind. All Laird products are sold pursuant to the Laird Terms and Conditions of sale in effect from time to time, a copy of which will be furnished upon request. © Copyright 2016 Laird Inc. All Rights Reserved. Laird, Laird Technologies, the Laird Logo, and other marks are trade marks or registered trade marks of Laird Inc. or an affiliate company thereof. Other product or service names may be the property of third parties. Nothing herein provides a license under any Laird or any third party intellectual property rights.